

Easy_Projector

Price/Performance Digital Profile Projector

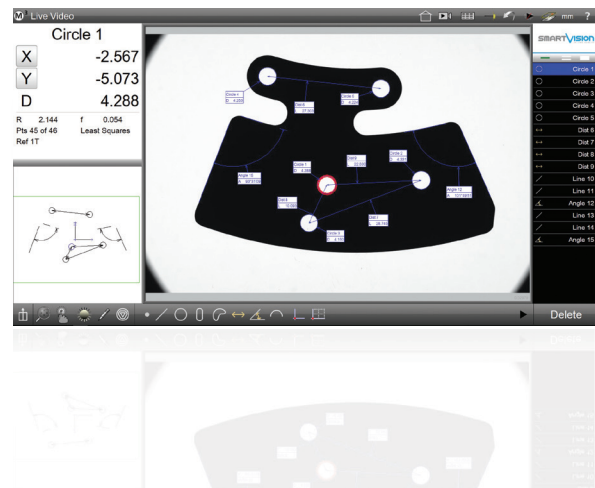


Easy_Projector

Price/Performance Digital Profile Projector



"Easy_Projector the best price/performance video measuring machine for the future of metrology"



Low Price & High Performances

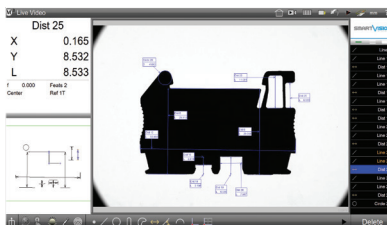
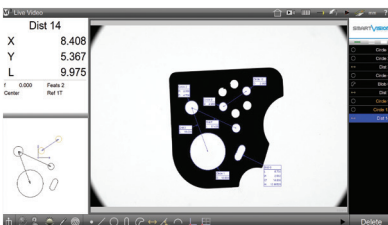
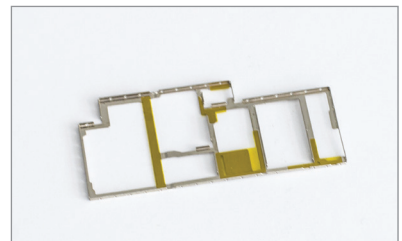
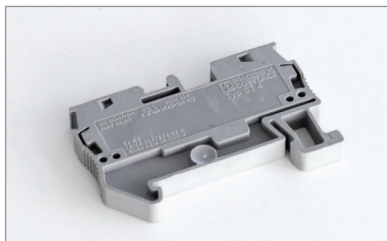
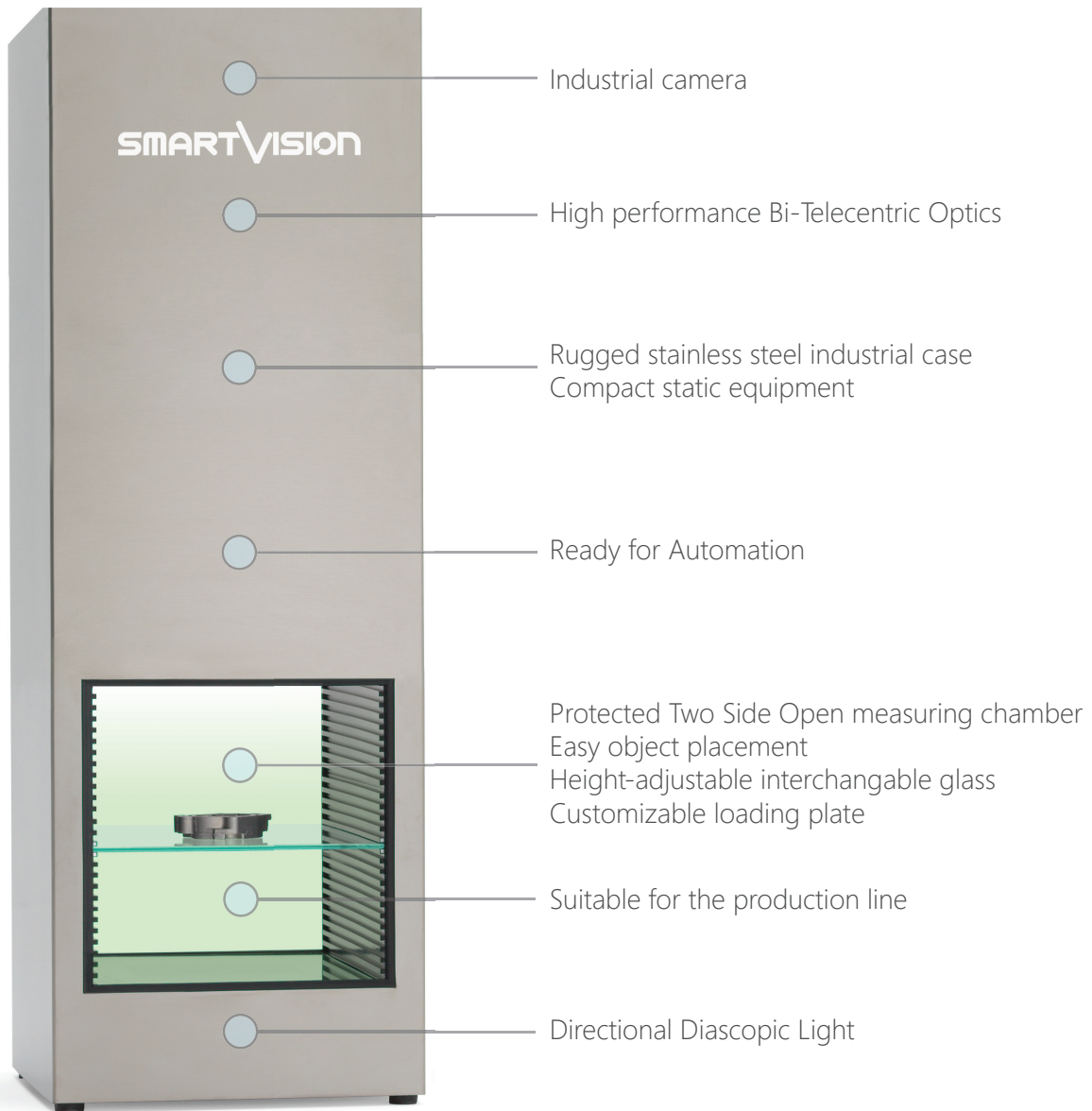
This special line offers products of same quality as traditional Smart_Projector family and similar performances related to the specific size of FoV. With no additional functionalities it makes what you need for your basic dimensional control in a fast and simple way with a small investment. It is equipped with a Next Unit Computing (NUC) and a metrology software.

Product Highlights:

- Specifically suited for massive (production) quality inspection, in-line control, incoming inspection
- Eliminates subjectivity and errors of operator-based gauging
- Increases number of quotas and quality check rate, up to 16000 checking features in a few seconds
- Performs full automatic reporting and SPC (Min, Max, Range, Average, Std Dev, 6 Sigma)
- Designed for in-production massive use
- Suitable for unskilled operators use
- Flexible investment with a fast Return on Investment
- Reduces time and costs of controls

Features

Easy_Projector - Price/Performance Digital Profile Projector



Specification

Easy_Projector - Price/Performace Digital Profile Projector

PC Device	NUC PC without monitor with Windos 10x64 PRO
Light receiving lens	Double telecentric lens
Field of View (FoV) ³ (mm)	92 x 61
FoV Type	Rectangular with vignetting
FoV Diagonal (mm)	100
FoV Area (mm ²)	5485
Measuring Chamber (mm) ⁵	200x250x280
Camera (M pixel)	6
Repeatability accuracy ⁴	±1 µm
Measurement accuracy ⁴	±6 µm
Dimensions (WxDxH mm)	290x330x880
Weight (kg)	25
Diascopic Light ¹	Directional
Adjustable Focus	Interchangeable glass
Operation ambient °C	+10 to +40°C
Power supply	110-240 Vac 50-60 Hz
Power consumption	2 A
Measurement points	16000 features max
Pattern search	XYΘ (accepts random positioning)
Tolerance	Angle, angularity, area, circumference, concentricity, diameter, flatness, form, length, parallelism, perpendicularity, radius, roundness, runout, straightness, symmetry, true position, width, XY position.
Statistical Analysis	Ready to connect with SPC software
CAD export	*.dxf file with nominal values and tolerance
CAD import	*.dxf file for profile match, nominal values and tolerance
Data Report	*.csv, *.tsv, *.txt
Print Report	Windows installed Printer (optional *.pdf), *.xps
User account control	Supervisor, Users 1 to 20 (with password login and editable rights)
Multi language interface	English, German, Spanish, French, Italian, Portuguese, Russian, Chinese, Japanese, Polish, Czech, Romanian. All languages are editable.

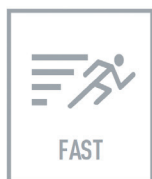
¹ Diascopic Light: Standard Directional led backlight.

³ Standard models - other custom FoV available on request.

⁴ Precision of measurement (±µm) of a line, obtained measuring a specific calibration target located approximately in FoV center, best focus position, at 25° C ±1°.

⁵ The dimensions of the measuring chamber are not the dimensions of the Field of View, therefore they have not to be considered as test area.

©2017, SmartVision. Technical specifications are approximated and are subject to change without notice. Printing errors excepted.



SMARTVISION
IN LINE QUALITY

info@smartvision.it
www.smartvision.it